

# Price History

## Tables and Charts

**USA**

**China**

**Western Europe**

**World Export**

Hot-rolled Band

Cold-rolled Coil

Standard Plate

Rebar

Steel Scrap

Register at: [www.steelbenchmarker.com](http://www.steelbenchmarker.com)



## USA v. World Export HRC Spread Falls to 7-month Low

World Export up 5.5%; Western Europe unchanged; China and USA down 0.7% and 5.9%

### **SteelBenchmarker™ Report #435**

ENGLEWOOD CLIFFS, NJ – The bi-monthly *SteelBenchmarker™* United States HRB price for May 27<sup>th</sup> fell again to \$839 per tonne for a second time this month. The World Export HRB price rose to \$580 per tonne after dropping two consecutive times. The Western European HRB price remained at \$680 per tonne (on a Euro basis, it was down by €1). The China HRB price went down to \$448 per tonne after increasing two consecutive times.

In its four hundred and thirty-fifth report, the *SteelBenchmarker™* released 10 steel products and 3 USA scrap prices. Of these, here are four benchmark prices for hot-rolled band May 27, 2024:

**USA** – \$839 per metric tonne (\$761 per net ton), FOB the mill – down \$53 from \$892 (\$809 nt) two weeks ago, up \$427 from the recent low of \$412 (\$374 nt) on Dec. 14, 2015 and up \$410 from the low of \$429 per tonne (\$390 nt) on May 25, 2009. It is down \$167 per tonne from the recent high of \$1,006 (\$912 nt) on Jul. 11, 2018. Also, it is down \$364 from the previous record peak of \$1,203 per tonne (\$1,091 nt) on July 28, 2008 and down \$1,304 (60.8%) from the record peak of \$2,143 per tonne (\$1,094 nt) on October 11, 2021.

**China** – \$448 per metric tonne, ex-works – down \$3 from \$451 two weeks ago, up \$217 per tonne from the recent low of \$231 on Dec. 14, 2015 and up \$41 per tonne from the low of \$407 per tonne on Oct. 12, 2009. It is down \$189 per tonne from the recent high of \$637 on Aug. 22, 2011. Also, it is down \$285 from the previous record peak of \$733 per tonne on July 14, 2008 and down \$357 (44.3%) from the record peak of \$805 per tonne on May 10, 2021.

**Western Europe** - \$680 (€628) per metric tonne, ex-works – no change (down €1) from \$680 (€629) two weeks ago, up \$334 (up €303) from the recent low of \$346 (€325) on Nov. 23, 2015 and up \$109 (up €247) from the low of \$571 (€381) per tonne on Nov. 23, 2009. It is down \$172 (up €23) per tonne from the recent high of \$852 (€605) on Mar. 28, 2011. Also, it is down \$524 (down €128) from the previous record peak of \$1,204 (€756) per tonne on July 14, 2008 and down \$870 (56.1%) (down €784) (55.5%) from the record peak of \$1,550 (€1,412) per tonne on March 28, 2022.

**World Export Price** – \$580 per metric tonne, FOB the port of export – up \$30 from \$550 compared to two weeks ago, up \$308 per tonne from the recent low of \$272 on Feb. 8, 2016 and up \$84 from the low of \$496 per tonne on Nov. 9, 2009. It is down \$193 per tonne from the recent high of \$773 on Feb 14, 2011. Also, it is down \$533 from the previous record peak of \$1,113 per tonne on July 28, 2008 and down \$695 (54.5%) from the record peak of \$1,275 per tonne on April 11, 2022



## STEELBENCHMARKER PRICES

May 27, 2024

dollars per metric tonne  
(net ton) [gross ton] {Euros}

### Region: USA, East of the Mississippi

|                         |       |         |
|-------------------------|-------|---------|
| Hot-rolled band:        | 839   | (761)   |
| Cold-rolled coil:       | 1,094 | (992)   |
| Standard plate:         | 1,360 | (1,234) |
| #1 Heavy melting scrap: | 320   | [325]   |
| Shredded scrap*:        | 387   | [393]   |
| #1 Busheling scrap:     | 407   | [414]   |

### Region: Mainland China\*\*\*

|                   |     |
|-------------------|-----|
| Hot-rolled band:  | 448 |
| Cold-rolled coil: | 515 |
| Rebar:            | 438 |
| Standard plate:   | 454 |

### Region: Western Europe

|                  |     |        |
|------------------|-----|--------|
| Hot-rolled band: | 680 | {628e} |
|------------------|-----|--------|

### Region: World Export Market

|                  |     |
|------------------|-----|
| Hot-rolled band: | 580 |
|------------------|-----|

#### NOTES:

Released May 29, 2024 at 9:00 a.m. to Price Assessment Providers.

The first price release was for April 10, 2006.

If a product is not listed or a price is not indicated, fewer than ten (10) price inputs were received at this time. \*\* Development stage -- fewer than 20 assessment providers.

Prices are: USA -- FOB mill; Western Europe and China -- Ex-works; and World Export Market - - FOB port of export. For USA steel scrap -- delivered to the steel plant. \* For shredded scrap the region is "for all but the West Coast" (CA, OR & WA).

\*\*\* SteelHome's non-steelbenchmarker derived average price for each product is the determinant of the Chinese ex-works benchmark price. It is published for comparative purposes.

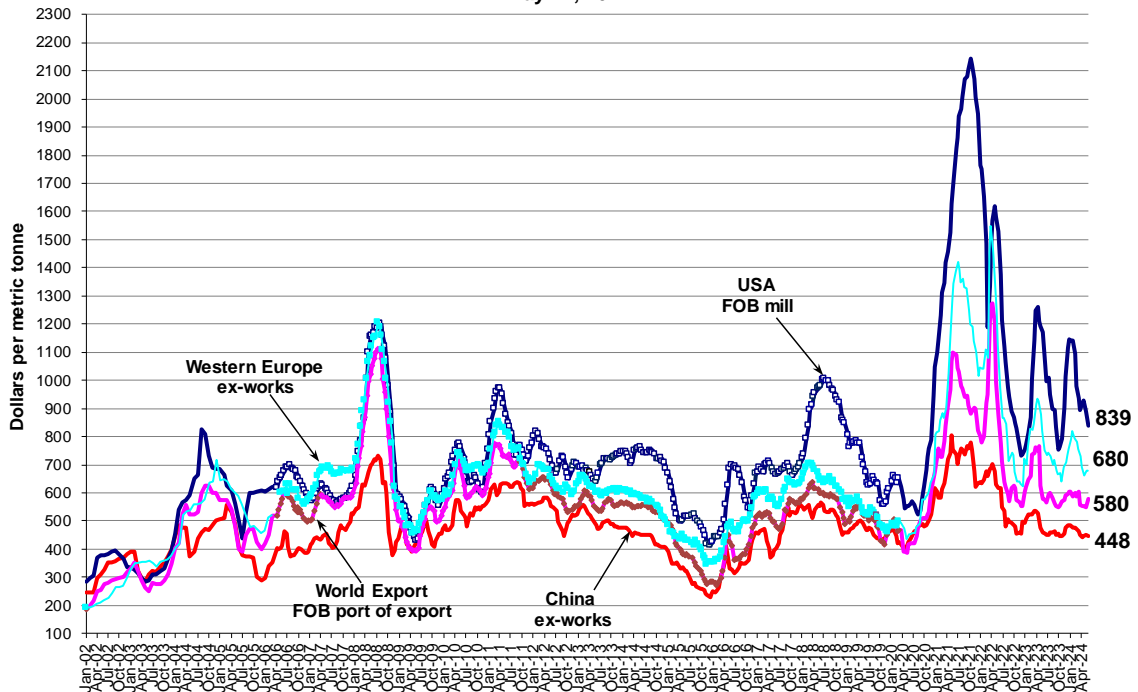
For product specifications go to [www.steelbenchmarker.com/specifications](http://www.steelbenchmarker.com/specifications).

## SteelBenchmarker™ HRB Price

USA, China, Western Europe and World Export

(WSD's PriceTrack data, Jan. 2002 - March 2006; SteelBenchmarker data begins April 2006)

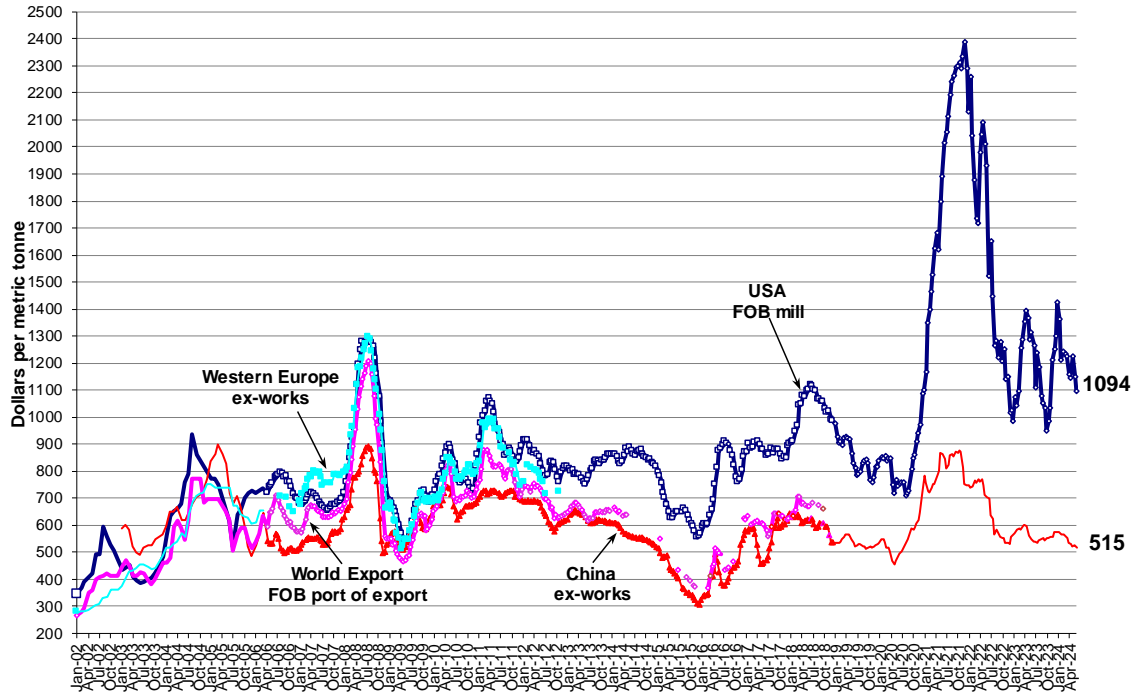
May 27, 2024



## SteelBenchmarker™ CRC Price

USA, China, Western Europe and World Export  
 (WSD's PriceTrack data, Jan. 2002 - March 2006; SteelBenchmarker data begins April 2006)

May 27, 2024



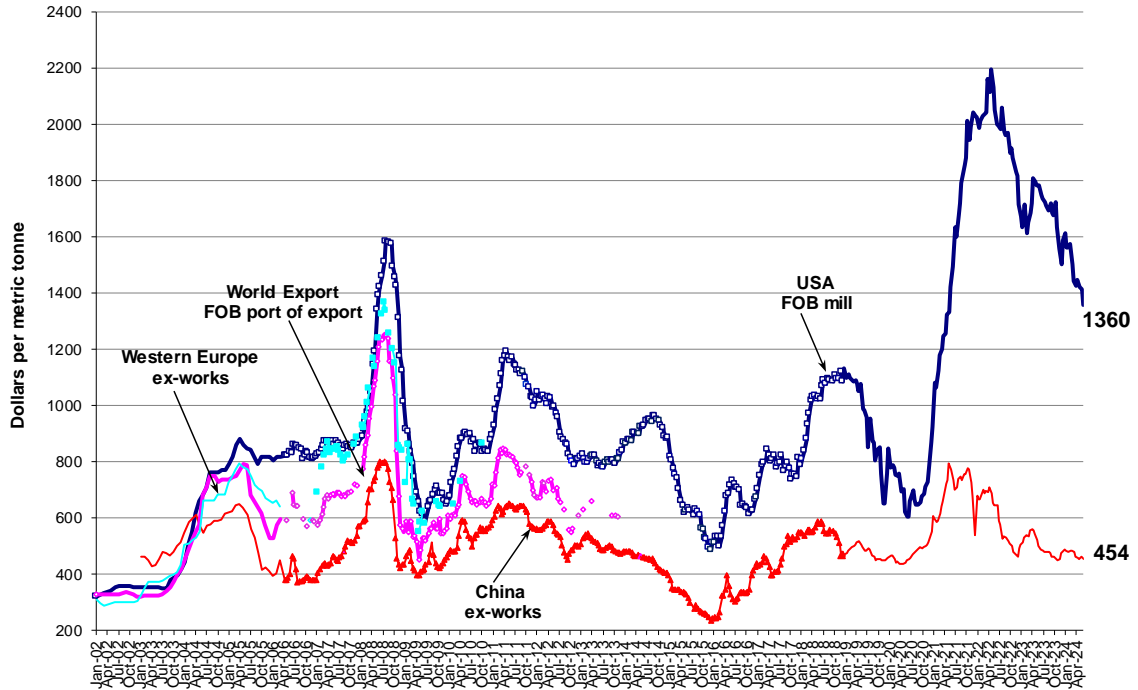


### SteelBenchmarker™ Plate Price

USA, China, Western Europe and World Export

(WSD's PriceTrack data, Jan. 2002 - March 2006; SteelBenchmarker data begins April 2006)

May 27, 2024

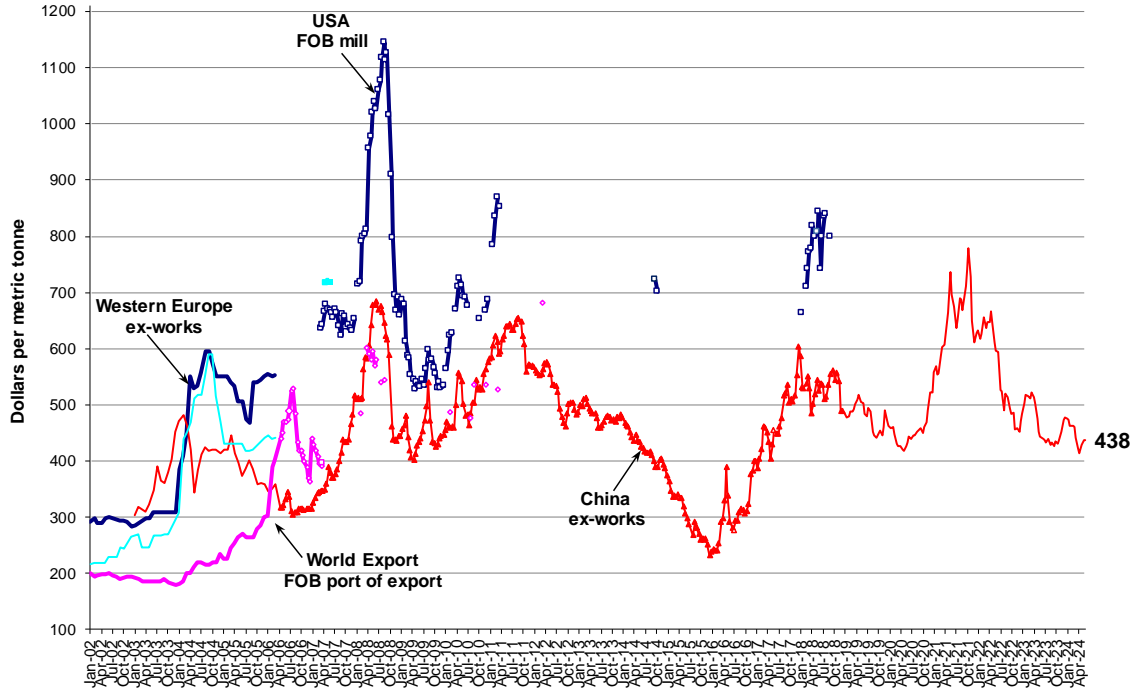


## SteelBenchmarker™ Rebar Price

USA, China, Western Europe and World Export

(WSD's PriceTrack data, Jan. 2002 - March 2006; SteelBenchmarker data begins April 2006)

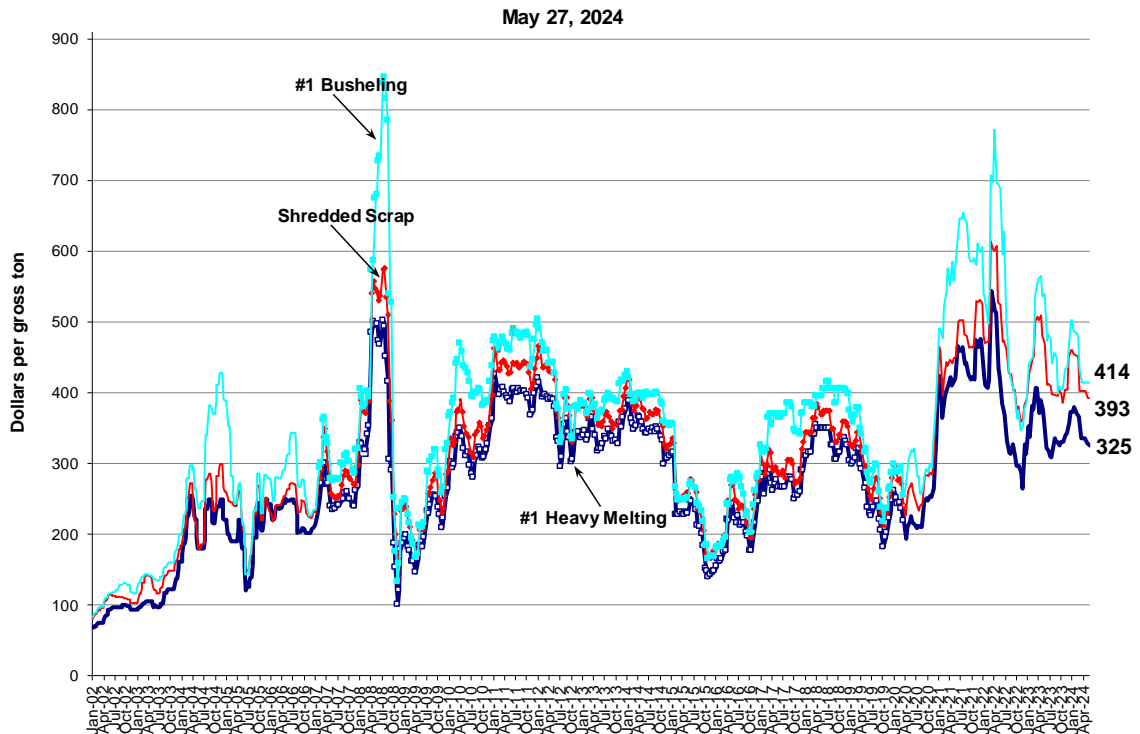
May 27, 2024



## SteelBenchmarker™ Scrap Price

USA, delivered to steel plant

(AMM scrap price data, Jan. 2002 - Jan. 2007; SteelBenchmarker data begins Feb. 2007)





**USA**  
**FOB mill\***  
*Dollars per Net Ton*

|           | -----HRB----- |                           |                           | -----CRC----- |                           |                           | -----Plate----- |                           |                           | -----Rebar----- |                           |                           |
|-----------|---------------|---------------------------|---------------------------|---------------|---------------------------|---------------------------|-----------------|---------------------------|---------------------------|-----------------|---------------------------|---------------------------|
|           | <u>Price</u>  | <u>Dir</u><br><u>Chng</u> | <u>Pct</u><br><u>Chng</u> | <u>Price</u>  | <u>Dir</u><br><u>Chng</u> | <u>Pct</u><br><u>Chng</u> | <u>Price</u>    | <u>Dir</u><br><u>Chng</u> | <u>Pct</u><br><u>Chng</u> | <u>Price</u>    | <u>Dir</u><br><u>Chng</u> | <u>Pct</u><br><u>Chng</u> |
| 09-Jan-23 | 699           | 15                        | 2.3%                      | 973           | 78                        | 8.7%                      | 1485            | -34                       | -2.3%                     | na              | -                         | -                         |
| 23-Jan-23 | 737           | 38                        | 5.5%                      | 944           | -29                       | -3.0%                     | 1555            | 70                        | 4.7%                      | na              | -                         | -                         |
| 13-Feb-23 | 787           | 50                        | 6.8%                      | 993           | 49                        | 5.2%                      | 1465            | -90                       | -5.8%                     | na              | -                         | -                         |
| 27-Feb-23 | 913           | 126                       | 16.0%                     | 1141          | 148                       | 14.9%                     | 1500            | 35                        | 2.4%                      | na              | -                         | -                         |
| 13-Mar-23 | 1036          | 123                       | 13.5%                     | 1168          | 27                        | 2.4%                      | 1528            | 27                        | 1.8%                      | na              | -                         | -                         |
| 27-Mar-23 | 1133          | 97                        | 9.4%                      | 1227          | 59                        | 5.0%                      | 1559            | 32                        | 2.1%                      | na              | -                         | -                         |
| 10-Apr-23 | 1143          | 10                        | 0.9%                      | 1266          | 38                        | 3.1%                      | 1643            | 83                        | 5.4%                      | na              | -                         | -                         |
| 24-Apr-23 | 1099          | -44                       | -3.9%                     | 1238          | -27                       | -2.2%                     | 1628            | -15                       | -0.9%                     | na              | -                         | -                         |
| 08-May-23 | 1083          | -15                       | -1.4%                     | 1169          | -69                       | -5.6%                     | 1619            | -9                        | -0.6%                     | na              | -                         | -                         |
| 22-May-23 | 1061          | -22                       | -2.0%                     | 1193          | 24                        | 2.0%                      | 1618            | -2                        | -0.1%                     | na              | -                         | -                         |
| 12-Jun-23 | 958           | -103                      | -9.7%                     | 1146          | -47                       | -4.0%                     | 1586            | -32                       | -2.0%                     | na              | -                         | -                         |
| 26-Jun-23 | 903           | -55                       | -5.8%                     | 1004          | -142                      | -12.4%                    | 1576            | -10                       | -0.6%                     | na              | -                         | -                         |
| 10-Jul-23 | 914           | 12                        | 1.3%                      | 1125          | 121                       | 12.0%                     | 1563            | -13                       | -0.8%                     | na              | -                         | -                         |
| 24-Jul-23 | 863           | -52                       | -5.7%                     | 1074          | -51                       | -4.5%                     | 1554            | -9                        | -0.6%                     | na              | -                         | -                         |
| 14-Aug-23 | 815           | -48                       | -5.6%                     | 979           | -95                       | -8.9%                     | 1538            | -16                       | -1.1%                     | na              | -                         | -                         |
| 28-Aug-23 | 812           | -3                        | -0.3%                     | 953           | -25                       | -2.6%                     | 1562            | 24                        | 1.6%                      | na              | -                         | -                         |
| 11-Sep-23 | 757           | -55                       | -6.8%                     | 939           | -15                       | -1.5%                     | 1530            | -33                       | -2.1%                     | na              | -                         | -                         |
| 25-Sep-23 | 683           | -73                       | -9.7%                     | 860           | -79                       | -8.4%                     | 1522            | -7                        | -0.5%                     | na              | -                         | -                         |
| 09-Oct-23 | 691           | 8                         | 1.2%                      | 893           | 33                        | 3.8%                      | 1565            | 43                        | 2.8%                      | na              | -                         | -                         |
| 23-Oct-23 | 719           | 28                        | 4.1%                      | 936           | 44                        | 4.9%                      | 1485            | -80                       | -5.1%                     | na              | -                         | -                         |
| 13-Nov-23 | 818           | 99                        | 13.7%                     | 1100          | 163                       | 17.4%                     | 1415            | -70                       | -4.7%                     | na              | -                         | -                         |
| 27-Nov-23 | 918           | 100                       | 12.2%                     | 1135          | 35                        | 3.2%                      | 1364            | -51                       | -3.6%                     | na              | -                         | -                         |
| 11-Dec-23 | 1011          | 93                        | 10.1%                     | 1180          | 45                        | 4.0%                      | 1442            | 78                        | 5.7%                      | na              | -                         | -                         |
| 25-Dec-23 | 1040          | 29                        | 2.9%                      | 1293          | 112                       | 9.5%                      | 1465            | 23                        | 1.6%                      | na              | -                         | -                         |
| 08-Jan-24 | 1036          | -4                        | -0.3%                     | 1237          | -56                       | -4.4%                     | 1419            | -46                       | -3.2%                     | na              | -                         | -                         |
| 22-Jan-24 | 1036          | 0                         | 0.0%                      | 1100          | -136                      | -11.0%                    | 1417            | -2                        | -0.1%                     | na              | -                         | -                         |
| 12-Feb-24 | 992           | -44                       | -4.3%                     | 1127          | 26                        | 2.4%                      | 1428            | 11                        | 0.8%                      | na              | -                         | -                         |
| 26-Feb-24 | 889           | -103                      | -10.3%                    | 1118          | -9                        | -0.8%                     | 1363            | -65                       | -4.6%                     | na              | -                         | -                         |
| 11-Mar-24 | 851           | -38                       | -4.3%                     | 1109          | -8                        | -0.7%                     | 1309            | -54                       | -3.9%                     | na              | -                         | -                         |
| 25-Mar-24 | 812           | -39                       | -4.6%                     | 1049          | -61                       | -5.5%                     | 1294            | -15                       | -1.2%                     | na              | -                         | -                         |
| 08-Apr-24 | 835           | 23                        | 2.8%                      | 1037          | -12                       | -1.1%                     | 1313            | 19                        | 1.5%                      | na              | -                         | -                         |
| 22-Apr-24 | 842           | 7                         | 0.9%                      | 1111          | 74                        | 7.2%                      | 1292            | -21                       | -1.6%                     | na              | -                         | -                         |
| 13-May-24 | 809           | -33                       | -3.9%                     | 1043          | -68                       | -6.1%                     | 1281            | -11                       | -0.8%                     | na              | -                         | -                         |
| 27-May-24 | 761           | -48                       | -5.9%                     | 992           | -51                       | -4.9%                     | 1234            | -47                       | -3.7%                     | na              | -                         | -                         |

Notes: \* Ex-works (the same as FOB mill)

Prices released on Wednesdays following the 2nd and 4th Mondays of the month at 9:00 AM to Price Assessment Providers. If a price is not indicated, fewer than ten (10) price inputs were received at that time. The first price release was for April 10, 2006 for data go to [steelbenchmarker.com/files/history2.pdf](http://steelbenchmarker.com/files/history2.pdf).

For product specifications refer to last page, or go to [steelbenchmarker.com/specifications](http://steelbenchmarker.com/specifications).

## USA

FOB mill\*

Dollars per Metric Tonne

|           | -----HRB----- |                 |                 | -----CRC----- |                 |                 | -----Plate----- |                 |                 | -----Rebar----- |                 |                 |
|-----------|---------------|-----------------|-----------------|---------------|-----------------|-----------------|-----------------|-----------------|-----------------|-----------------|-----------------|-----------------|
|           | <u>Price</u>  | <u>Dlr Chng</u> | <u>Pct Chng</u> | <u>Price</u>  | <u>Dlr Chng</u> | <u>Pct Chng</u> | <u>Price</u>    | <u>Dlr Chng</u> | <u>Pct Chng</u> | <u>Price</u>    | <u>Dlr Chng</u> | <u>Pct Chng</u> |
| 09-Jan-23 | 770           | 17              | 2.3%            | 1073          | 86              | 8.7%            | 1637            | -38             | -2.3%           | na              | -               | -               |
| 23-Jan-23 | 812           | 42              | 5.5%            | 1041          | -32             | -3.0%           | 1714            | 77              | 4.7%            | na              | -               | -               |
| 13-Feb-23 | 867           | 55              | 6.8%            | 1095          | 54              | 5.2%            | 1615            | -99             | -5.8%           | na              | -               | -               |
| 27-Feb-23 | 1006          | 139             | 16.0%           | 1258          | 163             | 14.9%           | 1654            | 39              | 2.4%            | na              | -               | -               |
| 13-Mar-23 | 1142          | 136             | 13.5%           | 1288          | 30              | 2.4%            | 1684            | 30              | 1.8%            | na              | -               | -               |
| 27-Mar-23 | 1249          | 107             | 9.4%            | 1353          | 65              | 5.0%            | 1719            | 35              | 2.1%            | na              | -               | -               |
| 10-Apr-23 | 1260          | 11              | 0.9%            | 1395          | 42              | 3.1%            | 1811            | 92              | 5.4%            | na              | -               | -               |
| 24-Apr-23 | 1211          | -49             | -3.9%           | 1365          | -30             | -2.2%           | 1795            | -16             | -0.9%           | na              | -               | -               |
| 08-May-23 | 1194          | -17             | -1.4%           | 1289          | -76             | -5.6%           | 1785            | -10             | -0.6%           | na              | -               | -               |
| 22-May-23 | 1170          | -24             | -2.0%           | 1315          | 26              | 2.0%            | 1783            | -2              | -0.1%           | na              | -               | -               |
| 12-Jun-23 | 1056          | -114            | -9.7%           | 1263          | -52             | -4.0%           | 1748            | -35             | -2.0%           | na              | -               | -               |
| 26-Jun-23 | 995           | -61             | -5.8%           | 1107          | -156            | -12.4%          | 1737            | -11             | -0.6%           | na              | -               | -               |
| 10-Jul-23 | 1008          | 13              | 1.3%            | 1240          | 133             | 12.0%           | 1723            | -14             | -0.8%           | na              | -               | -               |
| 24-Jul-23 | 951           | -57             | -5.7%           | 1184          | -56             | -4.5%           | 1713            | -10             | -0.6%           | na              | -               | -               |
| 14-Aug-23 | 898           | -53             | -5.6%           | 1079          | -105            | -8.9%           | 1695            | -18             | -1.1%           | na              | -               | -               |
| 28-Aug-23 | 895           | -3              | -0.3%           | 1051          | -28             | -2.6%           | 1722            | 27              | 1.6%            | na              | -               | -               |
| 11-Sep-23 | 834           | -61             | -6.8%           | 1035          | -16             | -1.5%           | 1686            | -36             | -2.1%           | na              | -               | -               |
| 25-Sep-23 | 753           | -81             | -9.7%           | 948           | -87             | -8.4%           | 1678            | -8              | -0.5%           | na              | -               | -               |
| 09-Oct-23 | 762           | 9               | 1.2%            | 984           | 36              | 3.8%            | 1725            | 47              | 2.8%            | na              | -               | -               |
| 23-Oct-23 | 793           | 31              | 4.1%            | 1032          | 48              | 4.9%            | 1637            | -88             | -5.1%           | na              | -               | -               |
| 13-Nov-23 | 902           | 109             | 13.7%           | 1212          | 180             | 17.4%           | 1560            | -77             | -4.7%           | na              | -               | -               |
| 27-Nov-23 | 1012          | 110             | 12.2%           | 1251          | 39              | 3.2%            | 1504            | -56             | -3.6%           | na              | -               | -               |
| 11-Dec-23 | 1114          | 102             | 10.1%           | 1301          | 50              | 4.0%            | 1590            | 86              | 5.7%            | na              | -               | -               |
| 25-Dec-23 | 1146          | 32              | 2.9%            | 1425          | 124             | 9.5%            | 1615            | 25              | 1.6%            | na              | -               | -               |
| 08-Jan-24 | 1142          | -4              | -0.3%           | 1363          | -62             | -4.4%           | 1564            | -51             | -3.2%           | na              | -               | -               |
| 22-Jan-24 | 1142          | 0               | 0.0%            | 1213          | -150            | -11.0%          | 1562            | -2              | -0.1%           | na              | -               | -               |
| 12-Feb-24 | 1093          | -49             | -4.3%           | 1242          | 29              | 2.4%            | 1574            | 12              | 0.8%            | na              | -               | -               |
| 26-Feb-24 | 980           | -113            | -10.3%          | 1232          | -10             | -0.8%           | 1502            | -72             | -4.6%           | na              | -               | -               |
| 11-Mar-24 | 938           | -42             | -4.3%           | 1223          | -9              | -0.7%           | 1443            | -59             | -3.9%           | na              | -               | -               |
| 25-Mar-24 | 895           | -43             | -4.6%           | 1156          | -67             | -5.5%           | 1426            | -17             | -1.2%           | na              | -               | -               |
| 08-Apr-24 | 920           | 25              | 2.8%            | 1143          | -13             | -1.1%           | 1447            | 21              | 1.5%            | na              | -               | -               |
| 22-Apr-24 | 928           | 8               | 0.9%            | 1225          | 82              | 7.2%            | 1424            | -23             | -1.6%           | na              | -               | -               |
| 13-May-24 | 892           | -36             | -3.9%           | 1150          | -75             | -6.1%           | 1412            | -12             | -0.8%           | na              | -               | -               |
| 27-May-24 | 839           | -53             | -5.9%           | 1094          | -56             | -4.9%           | 1360            | -52             | -3.7%           | na              | -               | -               |

Notes: \* Ex-works (the same as FOB mill)

Prices released on Wednesdays following the 2nd and 4th Mondays of the month at 9:00 AM to Price Assessment Providers. If a price is not indicated, fewer than ten (10) price inputs were received at that time. The first price release was for April 10, 2006 for data go to [steelbenchmarker.com/files/history2.pdf](http://steelbenchmarker.com/files/history2.pdf).

For product specifications refer to last page, or go to [steelbenchmarker.com/specifications](http://steelbenchmarker.com/specifications).

## USA

delivered to steel plant

Dollars per Gross Ton

|           | -----Steel Scrap**----- |          |          |                |          |          |              |          |          |
|-----------|-------------------------|----------|----------|----------------|----------|----------|--------------|----------|----------|
|           | #1 Heavy Melting        |          |          | Shredded Scrap |          |          | #1 Busheling |          |          |
|           | Price                   | Dlr Chng | Pct Chng | Price          | Dlr Chng | Pct Chng | Price        | Dlr Chng | Pct Chng |
| 09-Jan-23 | 353                     | 39       | 12.4%    | 406            | 15       | 3.8%     | 421          | 34       | 8.8%     |
| 23-Jan-23 | 338                     | -15      | -4.2%    | 427            | 21       | 5.2%     | 441          | 20       | 4.8%     |
| 13-Feb-23 | 381                     | 43       | 12.7%    | 448            | 21       | 4.9%     | 450          | 9        | 2.0%     |
| 27-Feb-23 | 377                     | -4       | -1.0%    | 452            | 4        | 0.9%     | 469          | 19       | 4.2%     |
| 13-Mar-23 | 407                     | 30       | 8.0%     | 501            | 49       | 10.8%    | 536          | 67       | 14.3%    |
| 27-Mar-23 | 406                     | -1       | -0.2%    | 508            | 7        | 1.4%     | 557          | 21       | 3.9%     |
| 10-Apr-23 | 371                     | -35      | -8.6%    | 503            | -5       | -1.0%    | 562          | 5        | 0.9%     |
| 24-Apr-23 | 390                     | 19       | 5.1%     | 510            | 7        | 1.4%     | 565          | 3        | 0.5%     |
| 08-May-23 | 377                     | -13      | -3.3%    | 481            | -29      | -5.7%    | 536          | -29      | -5.1%    |
| 22-May-23 | 360                     | -17      | -4.5%    | 470            | -11      | -2.3%    | 540          | 4        | 0.7%     |
| 12-Jun-23 | 322                     | -38      | -10.6%   | 411            | -59      | -12.6%   | 474          | -66      | -12.2%   |
| 26-Jun-23 | 317                     | -5       | -1.6%    | 413            | 2        | 0.5%     | 482          | 8        | 1.7%     |
| 10-Jul-23 | 311                     | -6       | -1.9%    | 409            | -4       | -1.0%    | 476          | -6       | -1.2%    |
| 24-Jul-23 | 309                     | -2       | -0.6%    | 398            | -11      | -2.7%    | 442          | -34      | -7.1%    |
| 14-Aug-23 | 336                     | 27       | 8.7%     | 398            | 0        | 0.0%     | 457          | 15       | 3.4%     |
| 28-Aug-23 | 330                     | -6       | -1.8%    | 395            | -3       | -0.8%    | 450          | -7       | -1.5%    |
| 11-Sep-23 | 330                     | 0        | 0.0%     | 395            | 0        | 0.0%     | 400          | -50      | -11.1%   |
| 25-Sep-23 | 325                     | -5       | -1.5%    | 405            | 10       | 2.5%     | 410          | 10       | 2.5%     |
| 09-Oct-23 | 330                     | 5        | 1.5%     | 398            | -7       | -1.7%    | 404          | -6       | -1.4%    |
| 23-Oct-23 | 330                     | 0        | 0.0%     | 385            | -13      | -3.3%    | 404          | 0        | -0.1%    |
| 13-Nov-23 | 341                     | 11       | 3.3%     | 405            | 20       | 5.2%     | 433          | 29       | 7.2%     |
| 27-Nov-23 | 342                     | 1        | 0.3%     | 405            | 0        | 0.0%     | 436          | 3        | 0.7%     |
| 11-Dec-23 | 358                     | 16       | 4.7%     | 450            | 45       | 11.1%    | 461          | 25       | 5.7%     |
| 25-Dec-23 | 373                     | 15       | 4.2%     | 460            | 10       | 2.2%     | 503          | 42       | 9.1%     |
| 08-Jan-24 | 373                     | 0        | 0.0%     | 460            | 0        | 0.0%     | 503          | 0        | 0.0%     |
| 22-Jan-24 | 379                     | 6        | 1.6%     | 455            | -5       | -1.1%    | 487          | -16      | -3.2%    |
| 12-Feb-24 | 372                     | -7       | -1.8%    | 452            | -3       | -0.7%    | 483          | -4       | -0.8%    |
| 26-Feb-24 | 367                     | -5       | -1.3%    | 452            | 0        | 0.0%     | 478          | -5       | -1.0%    |
| 11-Mar-24 | 351                     | -16      | -4.4%    | 402            | -50      | -11.1%   | 434          | -44      | -9.2%    |
| 25-Mar-24 | 335                     | -16      | -4.6%    | 402            | 0        | 0.0%     | 414          | -20      | -4.6%    |
| 08-Apr-24 | 335                     | 0        | 0.0%     | 402            | 0        | 0.0%     | 414          | 0        | 0.0%     |
| 22-Apr-24 | 335                     | 0        | 0.0%     | 402            | 0        | 0.0%     | 414          | 0        | 0.0%     |
| 13-May-24 | 329                     | -6       | -1.8%    | 393            | -9       | -2.2%    | 414          | 0        | 0.0%     |
| 27-May-24 | 325                     | -4       | -1.2%    | 393            | 0        | 0.0%     | 414          | 0        | 0.0%     |

Notes: \*\* Steel scrap delivered to steel plant

#1 heavy melting – demolition scrap that is at least ¼" thick. This grade does not include the heavy "p & s" (plate and structural) category that includes the very thick scrap items.

Shredded – largely old cars and some appliances – for all but the West Coast (CA, OR & WA).

#1 busheling – new sheet steel scrap.

Prices released on Wednesdays following the 2nd and 4th Mondays of the month at 9:00 AM to Price Assessment Providers. If a price is not indicated, fewer than ten (10) price inputs were received at that time. The first price release was for Feb.12, 2007 for data go to [steelbenchmarker.com/files/history2.pdf](http://steelbenchmarker.com/files/history2.pdf).

For product specifications refer to last page, or go to [steelbenchmarker.com/specifications](http://steelbenchmarker.com/specifications).

## China

### Ex-works

Dollars per Metric Tonne

|           | -----HRB----- |          |          | -----CRC----- |          |          | -----Plate----- |          |          | -----Rebar----- |          |          |
|-----------|---------------|----------|----------|---------------|----------|----------|-----------------|----------|----------|-----------------|----------|----------|
|           | Price         | Dlr Chng | Pct Chng | Price         | Dlr Chng | Pct Chng | Price           | Dlr Chng | Pct Chng | Price           | Dlr Chng | Pct Chng |
| 09-Jan-23 | 507           | 12       | 2.4%     | 571           | 8        | 1.4%     | 512             | 9        | 1.8%     | 503             | 19       | 3.9%     |
| 23-Jan-23 | 524           | 17       | 3.4%     | 584           | 13       | 2.3%     | 531             | 19       | 3.7%     | 517             | 14       | 2.8%     |
| 13-Feb-23 | 523           | -1       | -0.2%    | 587           | 3        | 0.5%     | 537             | 6        | 1.1%     | 516             | -1       | -0.2%    |
| 27-Feb-23 | 523           | 0        | 0.0%     | 583           | -4       | -0.7%    | 536             | -1       | -0.2%    | 512             | -4       | -0.8%    |
| 13-Mar-23 | 538           | 15       | 2.9%     | 598           | 15       | 2.6%     | 554             | 18       | 3.4%     | 522             | 10       | 2.0%     |
| 27-Mar-23 | 537           | -1       | -0.2%    | 602           | 4        | 0.7%     | 562             | 8        | 1.4%     | 514             | -8       | -1.5%    |
| 10-Apr-23 | 526           | -11      | -2.0%    | 594           | -8       | -1.3%    | 555             | -7       | -1.2%    | 502             | -12      | -2.3%    |
| 24-Apr-23 | 501           | -25      | -4.8%    | 580           | -14      | -2.4%    | 543             | -12      | -2.2%    | 475             | -27      | -5.4%    |
| 08-May-23 | 475           | -26      | -5.2%    | 561           | -19      | -3.3%    | 522             | -21      | -3.9%    | 453             | -22      | -4.6%    |
| 22-May-23 | 458           | -17      | -3.6%    | 546           | -15      | -2.7%    | 501             | -21      | -4.0%    | 443             | -10      | -2.2%    |
| 12-Jun-23 | 455           | -3       | -0.7%    | 538           | -8       | -1.5%    | 486             | -15      | -3.0%    | 439             | -4       | -0.9%    |
| 26-Jun-23 | 452           | -3       | -0.7%    | 537           | -1       | -0.2%    | 483             | -3       | -0.6%    | 437             | -2       | -0.5%    |
| 10-Jul-23 | 449           | -3       | -0.7%    | 534           | -3       | -0.6%    | 477             | -6       | -1.2%    | 432             | -5       | -1.1%    |
| 24-Jul-23 | 459           | 10       | 2.2%     | 542           | 8        | 1.5%     | 481             | 4        | 0.8%     | 440             | 8        | 1.9%     |
| 14-Aug-23 | 461           | 2        | 0.4%     | 547           | 5        | 0.9%     | 477             | -4       | -0.8%    | 428             | -12      | -2.7%    |
| 28-Aug-23 | 462           | 1        | 0.2%     | 552           | 5        | 0.9%     | 476             | -1       | -0.2%    | 432             | 4        | 0.9%     |
| 11-Sep-23 | 451           | -11      | -2.4%    | 544           | -8       | -1.4%    | 464             | -12      | -2.5%    | 427             | -5       | -1.2%    |
| 25-Sep-23 | 453           | 2        | 0.4%     | 552           | 8        | 1.5%     | 463             | -1       | -0.2%    | 435             | 8        | 1.9%     |
| 09-Oct-23 | 447           | -6       | -1.3%    | 553           | 1        | 0.2%     | 456             | -7       | -1.5%    | 431             | -4       | -0.9%    |
| 23-Oct-23 | 446           | -1       | -0.2%    | 558           | 5        | 0.9%     | 451             | -5       | -1.1%    | 437             | 6        | 1.4%     |
| 13-Nov-23 | 457           | 11       | 2.5%     | 554           | -4       | -0.7%    | 453             | 2        | 0.4%     | 452             | 15       | 3.4%     |
| 27-Nov-23 | 475           | 18       | 3.9%     | 572           | 18       | 3.2%     | 476             | 23       | 5.1%     | 473             | 21       | 4.6%     |
| 11-Dec-23 | 485           | 10       | 2.1%     | 575           | 3        | 0.5%     | 483             | 7        | 1.5%     | 477             | 4        | 0.8%     |
| 25-Dec-23 | 486           | 1        | 0.2%     | 576           | 1        | 0.2%     | 486             | 3        | 0.6%     | 475             | -2       | -0.4%    |
| 08-Jan-24 | 484           | -2       | -0.4%    | 572           | -4       | -0.7%    | 485             | -1       | -0.2%    | 473             | -2       | -0.4%    |
| 22-Jan-24 | 476           | -8       | -1.7%    | 564           | -8       | -1.4%    | 480             | -5       | -1.0%    | 463             | -10      | -2.1%    |
| 12-Feb-24 | 477           | 1        | 0.2%     | 563           | -1       | -0.2%    | 483             | 3        | 0.6%     | 463             | 0        | 0.0%     |
| 26-Feb-24 | 474           | -3       | -0.6%    | 561           | -2       | -0.4%    | 484             | 1        | 0.2%     | 460             | -3       | -0.6%    |
| 11-Mar-24 | 463           | -11      | -2.3%    | 553           | -8       | -1.4%    | 478             | -6       | -1.2%    | 441             | -19      | -4.1%    |
| 25-Mar-24 | 449           | -14      | -3.0%    | 535           | -18      | -3.3%    | 461             | -17      | -3.6%    | 422             | -19      | -4.3%    |
| 08-Apr-24 | 441           | -8       | -1.8%    | 529           | -6       | -1.1%    | 456             | -5       | -1.1%    | 413             | -9       | -2.1%    |
| 22-Apr-24 | 445           | 4        | 0.9%     | 520           | -9       | -1.7%    | 453             | -3       | -0.7%    | 429             | 16       | 3.9%     |
| 13-May-24 | 451           | 6        | 1.3%     | 526           | 6        | 1.2%     | 461             | 8        | 1.8%     | 438             | 9        | 2.1%     |
| 27-May-24 | 448           | -3       | -0.7%    | 515           | -11      | -2.1%    | 454             | -7       | -1.5%    | 438             | 0        | 0.0%     |

Notes: SteelHome's non-steelbenchmarker derived average price for each product is the determinant of the Chinese ex-works benchmark price. It is published for comparative purposes.

Prices released on Wednesdays following the 2nd and 4th Mondays of the month at 9:00 AM to Price Assessment Providers. If a price is not indicated, fewer than ten (10) price inputs were received at that time. The first price release was for April 10, 2006 for data go to [steelbenchmarker.com/files/history2.pdf](http://steelbenchmarker.com/files/history2.pdf).

For product specifications refer to last page, or go to [steelbenchmarker.com/specifications](http://steelbenchmarker.com/specifications).

## Western Europe

Ex-works

*Dollars per Metric Tonne*

|           | -----HRB----- |          |          | -----CRC----- |          |          | -----Plate----- |          |          | -----Rebar----- |          |          |
|-----------|---------------|----------|----------|---------------|----------|----------|-----------------|----------|----------|-----------------|----------|----------|
|           | Price         | Dir Chng | Pct Chng | Price         | Dir Chng | Pct Chng | Price           | Dir Chng | Pct Chng | Price           | Dir Chng | Pct Chng |
| 09-Jan-23 | 700           | -20      | -2.8%    | na            | -        | -        | na              | -        | -        | na              | -        | -        |
| 23-Jan-23 | 758           | 58       | 8.3%     | na            | -        | -        | na              | -        | -        | na              | -        | -        |
| 13-Feb-23 | 828           | 70       | 9.2%     | na            | -        | -        | na              | -        | -        | na              | -        | -        |
| 27-Feb-23 | 825           | -3       | -0.4%    | na            | -        | -        | na              | -        | -        | na              | -        | -        |
| 13-Mar-23 | 844           | 19       | 2.3%     | na            | -        | -        | na              | -        | -        | na              | -        | -        |
| 27-Mar-23 | 915           | 71       | 8.4%     | na            | -        | -        | na              | -        | -        | na              | -        | -        |
| 10-Apr-23 | 935           | 20       | 2.2%     | na            | -        | -        | na              | -        | -        | na              | -        | -        |
| 24-Apr-23 | 926           | -9       | -1.0%    | na            | -        | -        | na              | -        | -        | na              | -        | -        |
| 08-May-23 | 881           | -45      | -4.9%    | na            | -        | -        | na              | -        | -        | na              | -        | -        |
| 22-May-23 | 820           | -61      | -6.9%    | na            | -        | -        | na              | -        | -        | na              | -        | -        |
| 12-Jun-23 | 750           | -70      | -8.5%    | na            | -        | -        | na              | -        | -        | na              | -        | -        |
| 26-Jun-23 | 735           | -15      | -2.0%    | na            | -        | -        | na              | -        | -        | na              | -        | -        |
| 10-Jul-23 | 745           | 10       | 1.4%     | na            | -        | -        | na              | -        | -        | na              | -        | -        |
| 24-Jul-23 | 730           | -15      | -2.0%    | na            | -        | -        | na              | -        | -        | na              | -        | -        |
| 14-Aug-23 | 700           | -30      | -4.1%    | na            | -        | -        | na              | -        | -        | na              | -        | -        |
| 28-Aug-23 | 718           | 18       | 2.6%     | na            | -        | -        | na              | -        | -        | na              | -        | -        |
| 11-Sep-23 | 680           | -38      | -5.3%    | na            | -        | -        | na              | -        | -        | na              | -        | -        |
| 25-Sep-23 | 665           | -15      | -2.2%    | na            | -        | -        | na              | -        | -        | na              | -        | -        |
| 09-Oct-23 | 669           | 4        | 0.6%     | na            | -        | -        | na              | -        | -        | na              | -        | -        |
| 23-Oct-23 | 640           | -29      | -4.3%    | na            | -        | -        | na              | -        | -        | na              | -        | -        |
| 13-Nov-23 | 690           | 50       | 7.8%     | na            | -        | -        | na              | -        | -        | na              | -        | -        |
| 27-Nov-23 | 710           | 20       | 2.9%     | na            | -        | -        | na              | -        | -        | na              | -        | -        |
| 11-Dec-23 | 735           | 25       | 3.5%     | na            | -        | -        | na              | -        | -        | na              | -        | -        |
| 25-Dec-23 | 755           | 20       | 2.7%     | na            | -        | -        | na              | -        | -        | na              | -        | -        |
| 08-Jan-24 | 790           | 35       | 4.6%     | na            | -        | -        | na              | -        | -        | na              | -        | -        |
| 22-Jan-24 | 820           | 30       | 3.8%     | na            | -        | -        | na              | -        | -        | na              | -        | -        |
| 12-Feb-24 | 795           | -25      | -3.0%    | na            | -        | -        | na              | -        | -        | na              | -        | -        |
| 26-Feb-24 | 780           | -15      | -1.9%    | na            | -        | -        | na              | -        | -        | na              | -        | -        |
| 11-Mar-24 | 755           | -25      | -3.2%    | na            | -        | -        | na              | -        | -        | na              | -        | -        |
| 25-Mar-24 | 730           | -25      | -3.3%    | na            | -        | -        | na              | -        | -        | na              | -        | -        |
| 08-Apr-24 | 690           | -40      | -5.5%    | na            | -        | -        | na              | -        | -        | na              | -        | -        |
| 22-Apr-24 | 660           | -30      | -4.3%    | na            | -        | -        | na              | -        | -        | na              | -        | -        |
| 13-May-24 | 680           | 20       | 3.0%     | na            | -        | -        | na              | -        | -        | na              | -        | -        |
| 27-May-24 | 680           | 0        | 0.0%     | na            | -        | -        | na              | -        | -        | na              | -        | -        |

Notes:

Prices released on Wednesdays following the 2nd and 4th Mondays of the month at 9:00 AM to Price Assessment Providers. If a price is not indicated, fewer than ten (10) price inputs were received at that time. The first price release was for May 8, 2006 for data go to [steelbenchmarker.com/files/history2.pdf](http://steelbenchmarker.com/files/history2.pdf).

For product specifications refer to last page, or go to [steelbenchmarker.com/specifications](http://steelbenchmarker.com/specifications).

## Western Europe

Ex-works

Euros per Metric Tonne

|           | Euro<br>(\$/Euro) | -----HRB----- |              |             | -----CRC----- |              |             | -----Plate----- |              |             | -----Rebar----- |              |             |
|-----------|-------------------|---------------|--------------|-------------|---------------|--------------|-------------|-----------------|--------------|-------------|-----------------|--------------|-------------|
|           |                   | Price         | Euro<br>Chng | Pct<br>Chng | Price         | Euro<br>Chng | Pct<br>Chng | Price           | Euro<br>Chng | Pct<br>Chng | Price           | Euro<br>Chng | Pct<br>Chng |
| 09-Jan-23 | 1.052             | 666           | -11          | -2%         | na            | -            | -           | na              | -            | -           | na              | -            | -           |
| 23-Jan-23 | 1.086             | 698           | 32           | 5%          | na            | -            | -           | na              | -            | -           | na              | -            | -           |
| 13-Feb-23 | 1.072             | 772           | 74           | 11%         | na            | -            | -           | na              | -            | -           | na              | -            | -           |
| 27-Feb-23 | 1.061             | 778           | 5            | 1%          | na            | -            | -           | na              | -            | -           | na              | -            | -           |
| 13-Mar-23 | 1.073             | 787           | 9            | 1%          | na            | -            | -           | na              | -            | -           | na              | -            | -           |
| 27-Mar-23 | 1.080             | 848           | 61           | 8%          | na            | -            | -           | na              | -            | -           | na              | -            | -           |
| 10-Apr-23 | 1.091             | 857           | 9            | 1%          | na            | -            | -           | na              | -            | -           | na              | -            | -           |
| 24-Apr-23 | 1.102             | 840           | -16          | -2%         | na            | -            | -           | na              | -            | -           | na              | -            | -           |
| 08-May-23 | 1.097             | 803           | -37          | -4%         | na            | -            | -           | na              | -            | -           | na              | -            | -           |
| 22-May-23 | 1.081             | 759           | -44          | -6%         | na            | -            | -           | na              | -            | -           | na              | -            | -           |
| 12-Jun-23 | 1.078             | 696           | -63          | -8%         | na            | -            | -           | na              | -            | -           | na              | -            | -           |
| 26-Jun-23 | 1.090             | 674           | -22          | -3%         | na            | -            | -           | na              | -            | -           | na              | -            | -           |
| 10-Jul-23 | 1.100             | 677           | 3            | 0%          | na            | -            | -           | na              | -            | -           | na              | -            | -           |
| 24-Jul-23 | 1.106             | 660           | -17          | -3%         | na            | -            | -           | na              | -            | -           | na              | -            | -           |
| 14-Aug-23 | 1.090             | 642           | -18          | -3%         | na            | -            | -           | na              | -            | -           | na              | -            | -           |
| 28-Aug-23 | 1.082             | 664           | 22           | 3%          | na            | -            | -           | na              | -            | -           | na              | -            | -           |
| 11-Sep-23 | 1.075             | 633           | -31          | -5%         | na            | -            | -           | na              | -            | -           | na              | -            | -           |
| 25-Sep-23 | 1.059             | 628           | -5           | -1%         | na            | -            | -           | na              | -            | -           | na              | -            | -           |
| 09-Oct-23 | 1.057             | 633           | 5            | 1%          | na            | -            | -           | na              | -            | -           | na              | -            | -           |
| 23-Oct-23 | 1.067             | 600           | -33          | -5%         | na            | -            | -           | na              | -            | -           | na              | -            | -           |
| 13-Nov-23 | 1.069             | 645           | 45           | 8%          | na            | -            | -           | na              | -            | -           | na              | -            | -           |
| 27-Nov-23 | 1.100             | 645           | 0            | 0%          | na            | -            | -           | na              | -            | -           | na              | -            | -           |
| 11-Dec-23 | 1.080             | 681           | 35           | 5%          | na            | -            | -           | na              | -            | -           | na              | -            | -           |
| 25-Dec-23 | 1.105             | 683           | 3            | 0%          | na            | -            | -           | na              | -            | -           | na              | -            | -           |
| 08-Jan-24 | 1.095             | 722           | 38           | 6%          | na            | -            | -           | na              | -            | -           | na              | -            | -           |
| 22-Jan-24 | 1.088             | 754           | 32           | 4%          | na            | -            | -           | na              | -            | -           | na              | -            | -           |
| 12-Feb-24 | 1.077             | 738           | -16          | -2%         | na            | -            | -           | na              | -            | -           | na              | -            | -           |
| 26-Feb-24 | 1.085             | 719           | -19          | -3%         | na            | -            | -           | na              | -            | -           | na              | -            | -           |
| 11-Mar-24 | 1.093             | 691           | -28          | -4%         | na            | -            | -           | na              | -            | -           | na              | -            | -           |
| 25-Mar-24 | 1.084             | 674           | -17          | -3%         | na            | -            | -           | na              | -            | -           | na              | -            | -           |
| 08-Apr-24 | 1.086             | 635           | -38          | -6%         | na            | -            | -           | na              | -            | -           | na              | -            | -           |
| 22-Apr-24 | 1.065             | 619           | -16          | -3%         | na            | -            | -           | na              | -            | -           | na              | -            | -           |
| 13-May-24 | 1.079             | 630           | 11           | 2%          | na            | -            | -           | na              | -            | -           | na              | -            | -           |
| 27-May-24 | 1.084             | 628           | -3           | 0%          | na            | -            | -           | na              | -            | -           | na              | -            | -           |

Notes:

Prices released on Wednesdays following the 2nd and 4th Mondays of the month at 9:00 AM to Price Assessment Providers. If a price is not indicated, fewer than ten (10) price inputs were received at that time. The first price release was for May 8, 2006 for data go to [steelbenchmarker.com/files/history2.pdf](http://steelbenchmarker.com/files/history2.pdf).

For product specifications refer to last page, or go to [steelbenchmarker.com/specifications](http://steelbenchmarker.com/specifications).



## World Export FOB the Port of Export Dollars per Metric Tonne

|           | -----HRB----- |             |             | -----CRC----- |             |             | -----Plate----- |             |             | -----Rebar----- |             |             |
|-----------|---------------|-------------|-------------|---------------|-------------|-------------|-----------------|-------------|-------------|-----------------|-------------|-------------|
|           | Price         | Dir<br>Chng | Pct<br>Chng | Price         | Dir<br>Chng | Pct<br>Chng | Price           | Dir<br>Chng | Pct<br>Chng | Price           | Dir<br>Chng | Pct<br>Chng |
| 09-Jan-23 | 620           | 15          | 2.5%        | na            | -           | -           | na              | -           | -           | na              | -           | -           |
| 23-Jan-23 | 646           | 26          | 4.2%        | na            | -           | -           | na              | -           | -           | na              | -           | -           |
| 13-Feb-23 | 658           | 12          | 1.9%        | na            | -           | -           | na              | -           | -           | na              | -           | -           |
| 27-Feb-23 | 735           | 77          | 11.7%       | na            | -           | -           | na              | -           | -           | na              | -           | -           |
| 13-Mar-23 | 740           | 5           | 0.7%        | na            | -           | -           | na              | -           | -           | na              | -           | -           |
| 27-Mar-23 | 760           | 20          | 2.7%        | na            | -           | -           | na              | -           | -           | na              | -           | -           |
| 10-Apr-23 | 750           | -10         | -1.3%       | na            | -           | -           | na              | -           | -           | na              | -           | -           |
| 24-Apr-23 | 765           | 15          | 2.0%        | na            | -           | -           | na              | -           | -           | na              | -           | -           |
| 08-May-23 | 625           | -140        | -18.3%      | na            | -           | -           | na              | -           | -           | na              | -           | -           |
| 22-May-23 | 580           | -45         | -7.2%       | na            | -           | -           | na              | -           | -           | na              | -           | -           |
| 12-Jun-23 | 573           | -7          | -1.2%       | na            | -           | -           | na              | -           | -           | na              | -           | -           |
| 26-Jun-23 | 565           | -8          | -1.4%       | na            | -           | -           | na              | -           | -           | na              | -           | -           |
| 10-Jul-23 | 595           | 30          | 5.3%        | na            | -           | -           | na              | -           | -           | na              | -           | -           |
| 24-Jul-23 | 601           | 6           | 1.0%        | na            | -           | -           | na              | -           | -           | na              | -           | -           |
| 14-Aug-23 | 585           | -16         | -2.7%       | na            | -           | -           | na              | -           | -           | na              | -           | -           |
| 28-Aug-23 | 560           | -25         | -4.3%       | na            | -           | -           | na              | -           | -           | na              | -           | -           |
| 11-Sep-23 | 555           | -5          | -0.9%       | na            | -           | -           | na              | -           | -           | na              | -           | -           |
| 25-Sep-23 | 550           | -5          | -0.9%       | na            | -           | -           | na              | -           | -           | na              | -           | -           |
| 09-Oct-23 | 555           | 5           | 0.9%        | na            | -           | -           | na              | -           | -           | na              | -           | -           |
| 23-Oct-23 | 570           | 15          | 2.7%        | na            | -           | -           | na              | -           | -           | na              | -           | -           |
| 13-Nov-23 | 575           | 5           | 0.9%        | na            | -           | -           | na              | -           | -           | na              | -           | -           |
| 27-Nov-23 | 590           | 15          | 2.6%        | na            | -           | -           | na              | -           | -           | na              | -           | -           |
| 11-Dec-23 | 595           | 5           | 0.8%        | na            | -           | -           | na              | -           | -           | na              | -           | -           |
| 25-Dec-23 | 605           | 10          | 1.7%        | na            | -           | -           | na              | -           | -           | na              | -           | -           |
| 08-Jan-24 | 606           | 1           | 0.2%        | na            | -           | -           | na              | -           | -           | na              | -           | -           |
| 22-Jan-24 | 586           | -20         | -3.3%       | na            | -           | -           | na              | -           | -           | na              | -           | -           |
| 12-Feb-24 | 600           | 14          | 2.4%        | na            | -           | -           | na              | -           | -           | na              | -           | -           |
| 26-Feb-24 | 588           | -12         | -2.0%       | na            | -           | -           | na              | -           | -           | na              | -           | -           |
| 11-Mar-24 | 605           | 17          | 2.9%        | na            | -           | -           | na              | -           | -           | na              | -           | -           |
| 25-Mar-24 | 558           | -47         | -7.8%       | na            | -           | -           | na              | -           | -           | na              | -           | -           |
| 08-Apr-24 | 555           | -3          | -0.5%       | na            | -           | -           | na              | -           | -           | na              | -           | -           |
| 22-Apr-24 | 552           | -3          | -0.5%       | na            | -           | -           | na              | -           | -           | na              | -           | -           |
| 13-May-24 | 550           | -2          | -0.4%       | na            | -           | -           | na              | -           | -           | na              | -           | -           |
| 27-May-24 | 580           | 30          | 5.5%        | na            | -           | -           | na              | -           | -           | na              | -           | -           |

Notes:

Prices released on Wednesdays following the 2nd and 4th Mondays of the month at 9:00 AM to Price Assessment Providers. If a price is not indicated, fewer than ten (10) price inputs were received at that time. The first price release was for April 10, 2006 for data go to [steelbenchmarker.com/files/history2.pdf](http://steelbenchmarker.com/files/history2.pdf).

For product specifications refer to last page, or go to [steelbenchmarker.com/specifications](http://steelbenchmarker.com/specifications).

## Spot Market New Booking Prices for Near-Term Delivery Commodity-grade product to mid-sized buyers

(Dollars per Metric Tonne, 500 to 2,000 tonnes transaction size)

### USA Market East of the Mississippi

| FOB mill   |
|--|
| <b>Hot-rolled band *</b><br>(0.2" thick x 48-60" wide)                                     |
| <b>Cold-rolled coil *</b><br>(0.03" x 48-60" wide)   |
| <b>Rebar #5 *</b><br>(5/8" in diameter)  |
| <b>Standard plate *</b><br>(1" x 96" x 240")   |
| <b>Steel scrap **</b><br>#1 Heavy melting<br>Shredded - all but West Coast<br>#1 Busheling |

### Western Europe Market Germany/France

| Ex-works   |
|--|
| <b>Hot-rolled band *</b><br>(5mm thick x 1200-1500mm wide) |
| <b>Cold-rolled coil *</b><br>(0.7mm x 1200-1500mm wide)    |
| <b>Rebar #5 *</b><br>(16mm in diameter)                    |
| <b>Standard plate *</b><br>(24mm x 2400mm x 6000mm)        |

### Chinese Market Home Market

| Ex-works   |
|--|
| <b>Hot-rolled band *</b><br>(5mm thick x 1200-1500mm wide) |
| <b>Cold-rolled coil *</b><br>(0.7mm x 1200-1500mm wide)    |
| <b>Rebar #5 *</b><br>(16mm in diameter)                    |
| <b>Standard plate *</b><br>(24mm x 2400mm x 6000mm)        |

### World Export Market Atlantic and Pacific Basin

| FOB port of export   |
|--|
| <b>Hot-rolled band ***</b><br>(5mm thick x 1200-1500mm wide) |
| <b>Cold-rolled coil ***</b><br>(0.7mm x 1200-1500mm wide)    |
| <b>Rebar #5 ***</b><br>(16mm in diameter)                    |
| <b>Standard plate ***</b><br>(24mm x 2400mm x 6000mm)        |

Note: Near-term delivery is normally two to six weeks.

Hot-rolled band is the first product off the hot strip mill with: (1) a thickness of about 0.20 inch (but no less than 0.10 inch or more than 0.50 inch); (2) a coil size of 10 to 20 tons; (3) a width of 48 to 60 inches; and (4) a carbon component of 0.08% to 0.13%.

SteelHome's average price for each product is the determinant of the Chinese ex-works benchmark price. It is published for comparative purposes.

\* Ex-works (the same as FOB mill).

\*\* Steel scrap delivered to steel plant on a near-term basis, normally from two days to a month.

#1 heavy melting – demolition scrap that is at least ¼" thick and surface dimension no larger than 60 by 24 inches. This grade does not include the heavy "p & s" (plate and structural) category that includes the very thick scrap items.

Shredded – largely old cars and some appliances – for all but the West Coast (California, Oregon and Washington).

Shredded scrap is homogeneous iron and steel scrap magnetically separated, no. 1, no. 2 steel, miscellaneous bailing and sheet scrap with an average weight from 50 to 70 pounds per square foot.

#1 busheling – new sheet steel scrap.

\*\*\* FOB port of export